



Pearmtree Hill Solar Farm

Environmental Statement

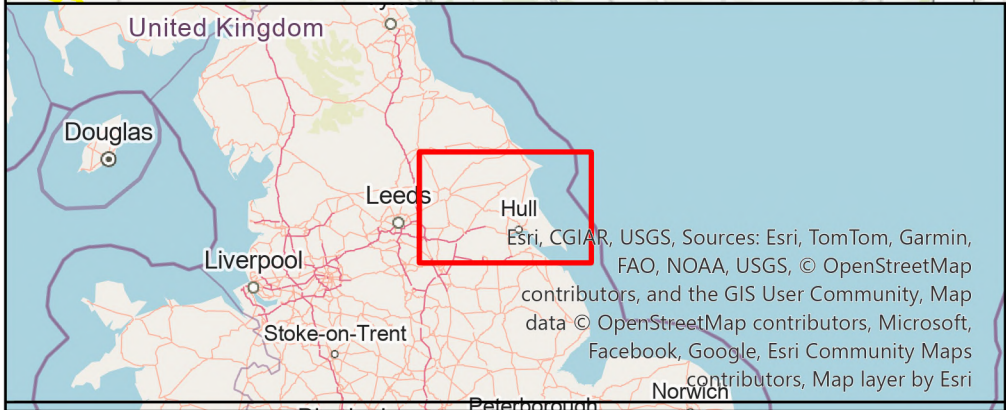
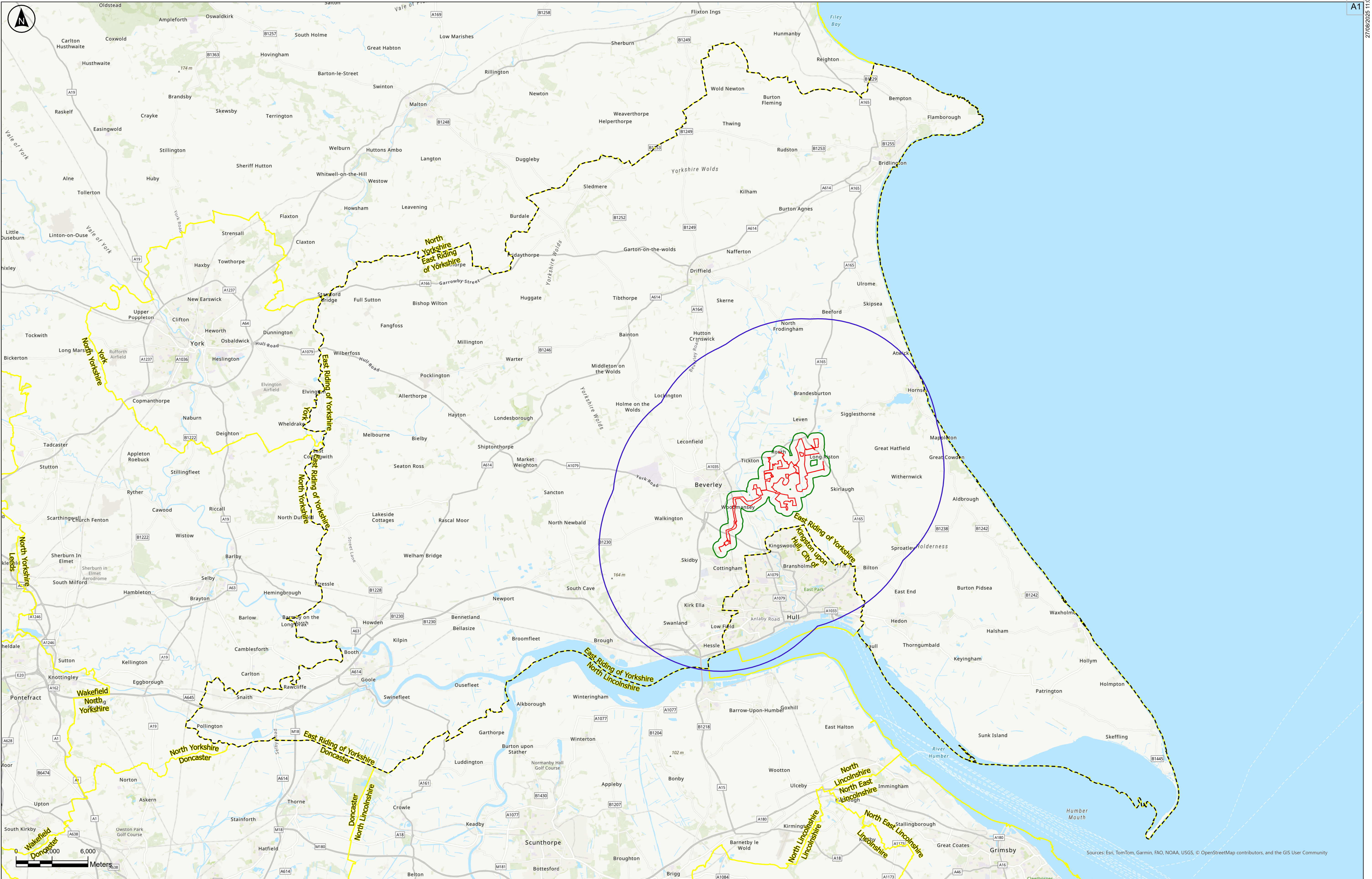
Volume 3

Figure 13.1: Study Area for Population

Revision 2

Application Document Ref: EN010157/APP/6.3
September 2025

Planning Act 2008
Infrastructure Planning
(Applications: Prescribed Forms
and Procedure) Regulations 2009 –
Regulation 5(2)(a)



Key	
	Order Limits
	Local Planning Authority Administrative Boundary
	Study Area for Walkers, Cyclists, Horse Riders, Agricultural Land Holdings, Businesses and Common Land
	Study Area for Occupancy rates
	Study Area for Employment

The Base mapping is based upon Ordnance Survey (OS) data. Reproduced from Ordnance Survey maps by permission of Ordnance Survey on behalf of the controller of His Majesty's Stationery Office (HMSO). © Crown Copyright Ordnance Survey 2024. Licence number 0100031673.

Notes:	

P02	27/08/2025	CJ	MB	WH	BT
Rev	Date	By	Chkd	Appd	Authd

RWE

RSK

Designer

Project Name	Peartree Hill Solar Farm
--------------	--------------------------

Drawing Title	Environmental Statement Volume 3, Figure 13.1: Study Area for Population
SHEET 1 OF 1	

Scale at A1 1:20000	Coordinate System: British National Grid
Status DCO Application	
PINS Number EN010157/APP/6.3	Rev P02

RWE Renewables UK Limited

Windmill Hill Business Park,
Whitehill Way,
Swindon,
Wiltshire,
England,
SN5 6PB
www.rwe.com